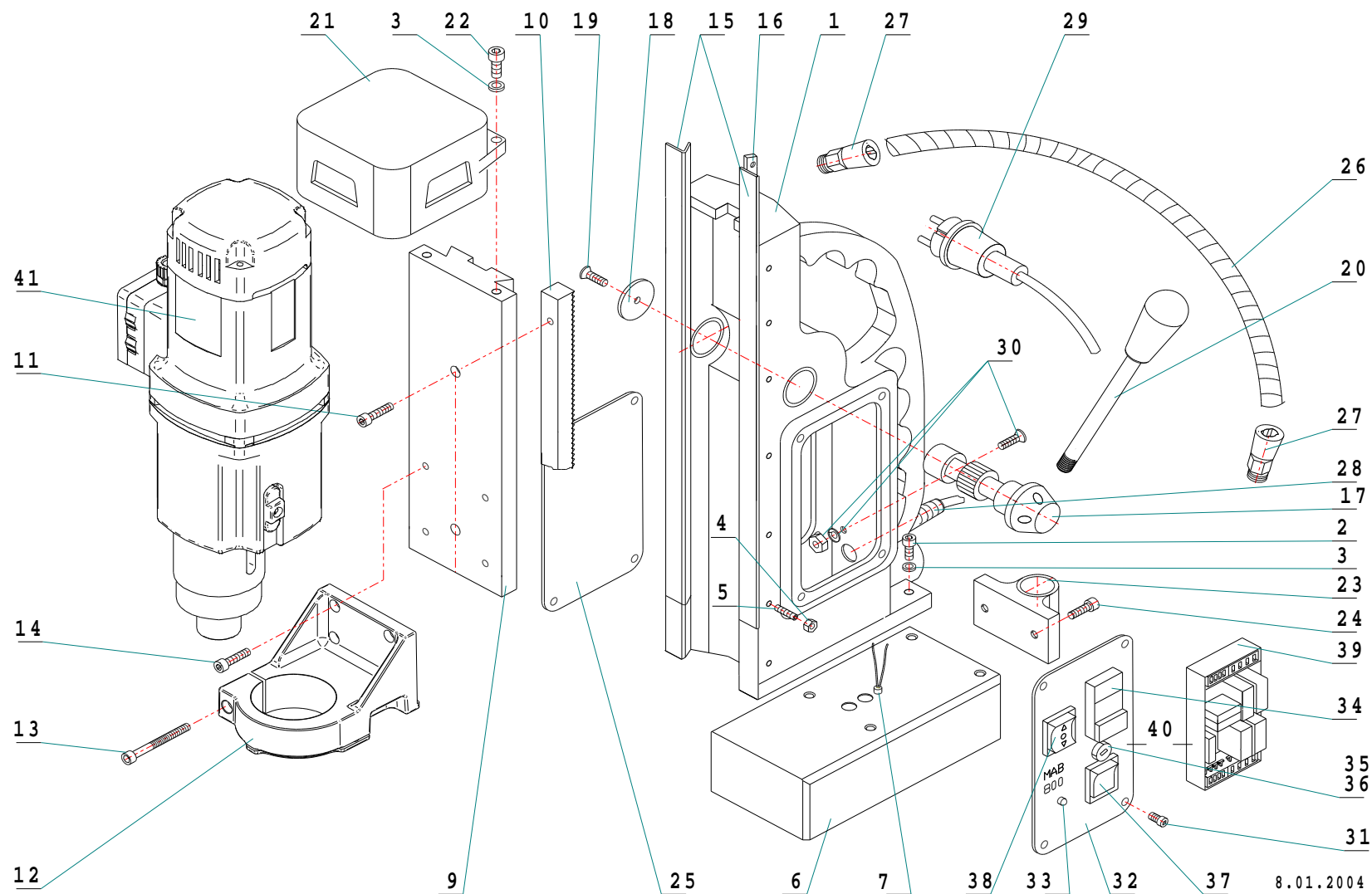
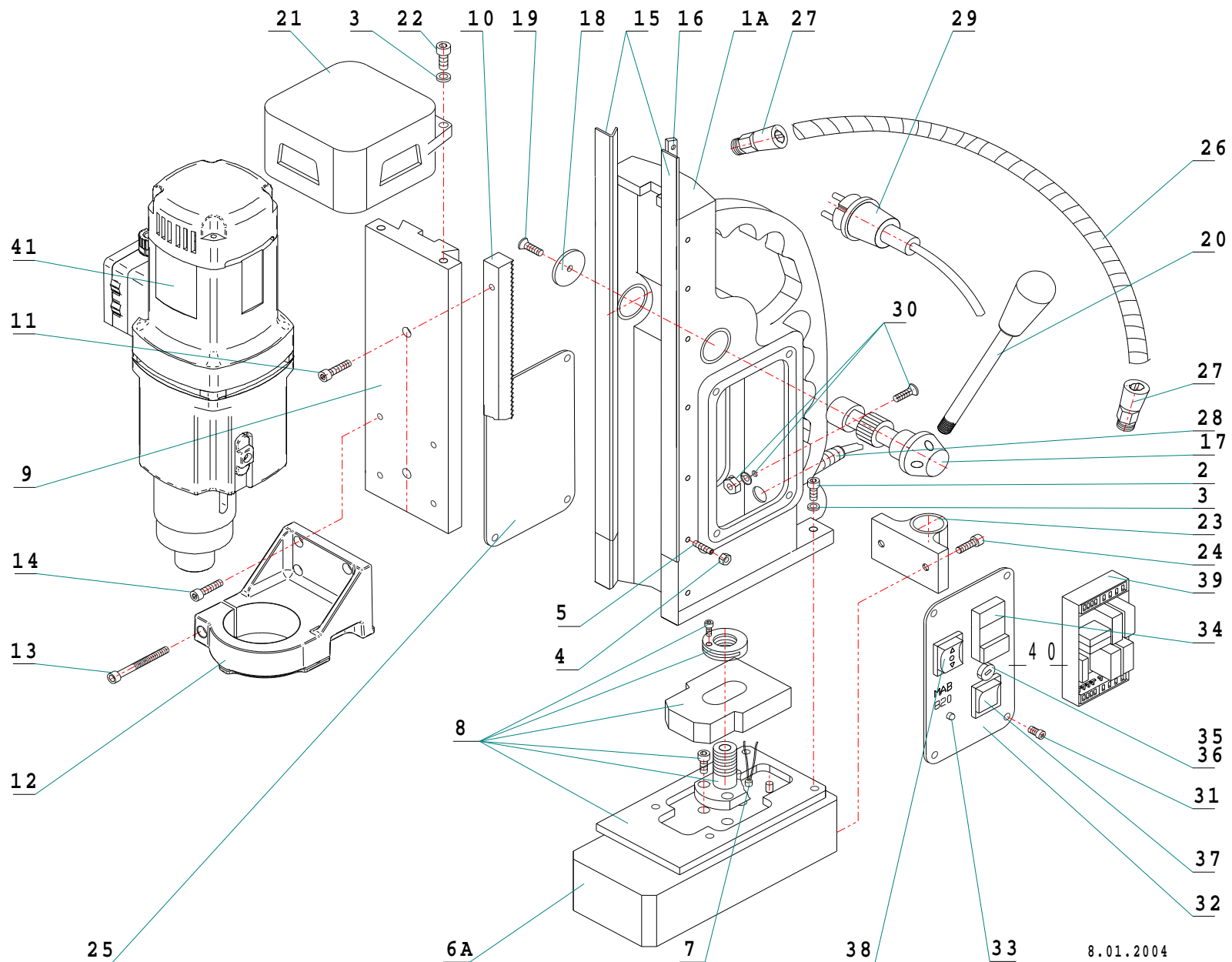


MAB 800
Antriebseinheit MAB 800.4E 1800W



MAB 840/2002

Antriebseinheit 1800W 4 - Gang



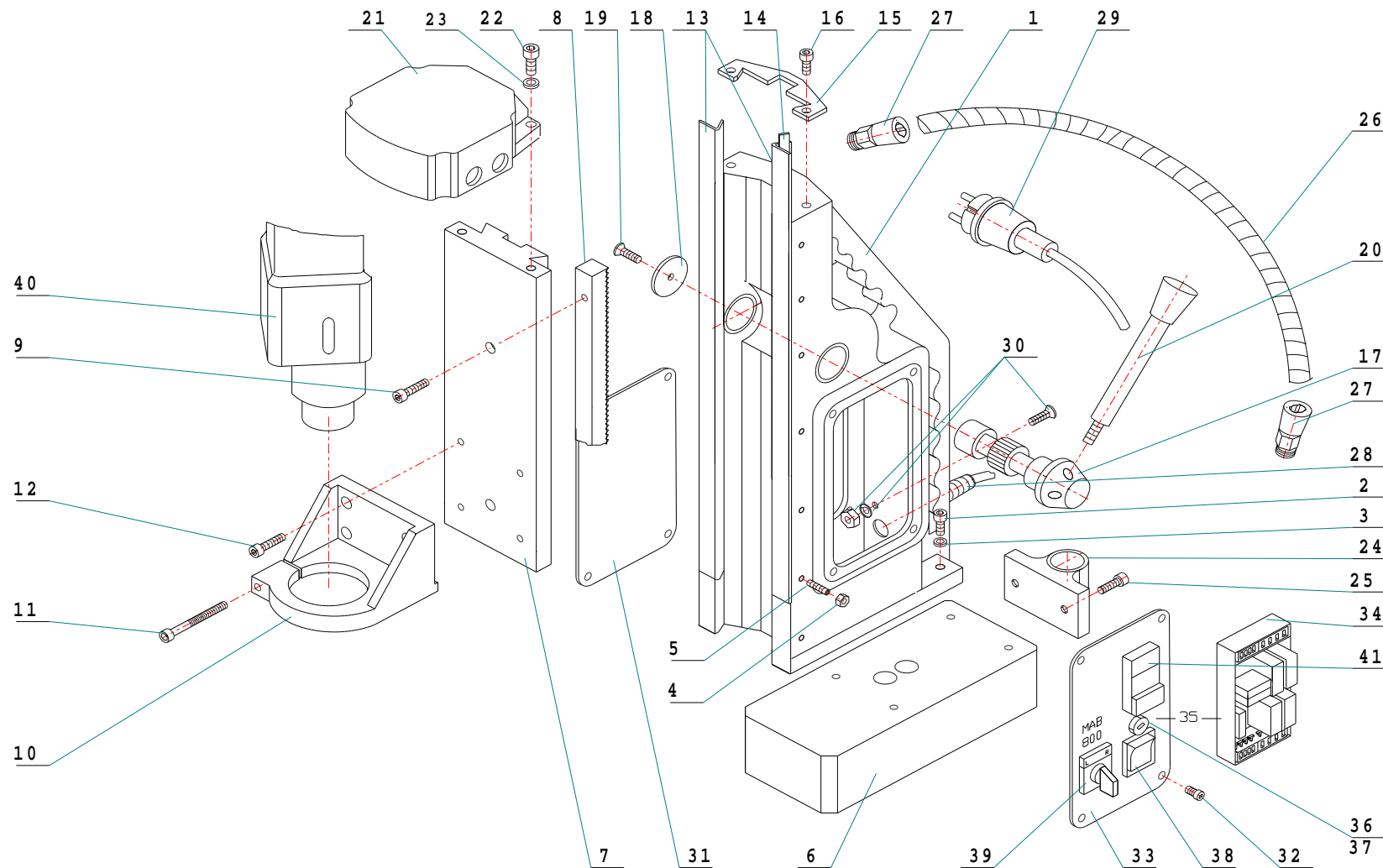
Sto-ipm.ru

Item No.	Part.-No.	Denomination
1	60 1041 2	Housing for screws M8 without groove
1 A	60 1061 2	Housing for swivel base, screws M8 without groove
2	60 1062 1	Screw M8x25
3	60 1057 1	Spring washer 8,3
4	60 1003 1	Nut M5
5	60 1042 1	Adjusting screw M5x25 for slide
6	60 1043 2	Magnet electric with indicator M8
6 A	60 1066 1	Magnet electric with indicator for screws M8 for swivel base
7	60 1006 1	Magnet indicator
8	60 1063 1	Swivel base complete
9	60 1067 1	Dovetail carriage, asymmetrical, length: 339 mm width: 100 mm hole distance 66 mm
10	60 1045 1	Tooth rack length: 280 mm
11	60 1046 1	Screw for tooth rack M6x30
12	60 1047 1	Gear holder for motor fixing
13	60 1048 1	Screw for gear holder M6x55
14	60 1001 1	Screw M6x16
15	60 1049 3	Guide rail (1 set right/left) to be glued
16	60 1050 2	Adjustment rail right
17	60 1053 1	Shaft for gear wheel
18	60 1022 1	Disc for tooth rack
19	60 1023 1	Screw for gear wheel M6x16
20	60 1054 2	Handle rod with knob
21	60 1065 1	Cover for motor black
22	60 1056 1	Screw for cover M8x35
23	60 1058 1	Magnet release assembly
24	60 1059 1	Screw M8x16
25	70 1062 1	Side plate
26	70 1000 1	Cable protecting tube
26 A	70 1054 1	Cable protection tube complete with gland and cable
27	70 1002 1	Gland PG 9
28	70 1003 1	Mains cable gland PG 11
29	70 1004 1	Connection cable 220 - 240 V with plug
29 A	70 1041 1	Connection cable 220 - 240 V with English plug
29 B	70 1005 1	Connection cable 110 V (plug on demand)
30	70 1006 1	Earth screw, complete
31	70 1008 1	Screw for side plate M4x6
32	70 1063 1	Switch plate front side for indicator
33	70 1010 1	LED - display for indicator red/green
34	70 1011 1	Actuator

Item No.	Part.-No.	Denomination
35	70 1012 1	Fuse holder
36	70 1013 1	Fuse 2A, 5x20, 250 V F DIN 41 661
37	70 1014 1	Magnet switch
38	70 1048 1	Rocker switch right-/left
39	70 1049 2	PC board with 5 Relais 230 V
39 A	70 1050 2	PC board with 5 Relais 110 V
40	70 1064 2	Switch plate complete with switches and PC board 230 V
40 A	70 1065 2	Switch plate complete with switches and PC board 110 V
41	50 0800 2	Motor MAB 800.4E complete 230 V
41 A	50 0810 2	Motor MAB 800.4E complete 110 V

MAB 800

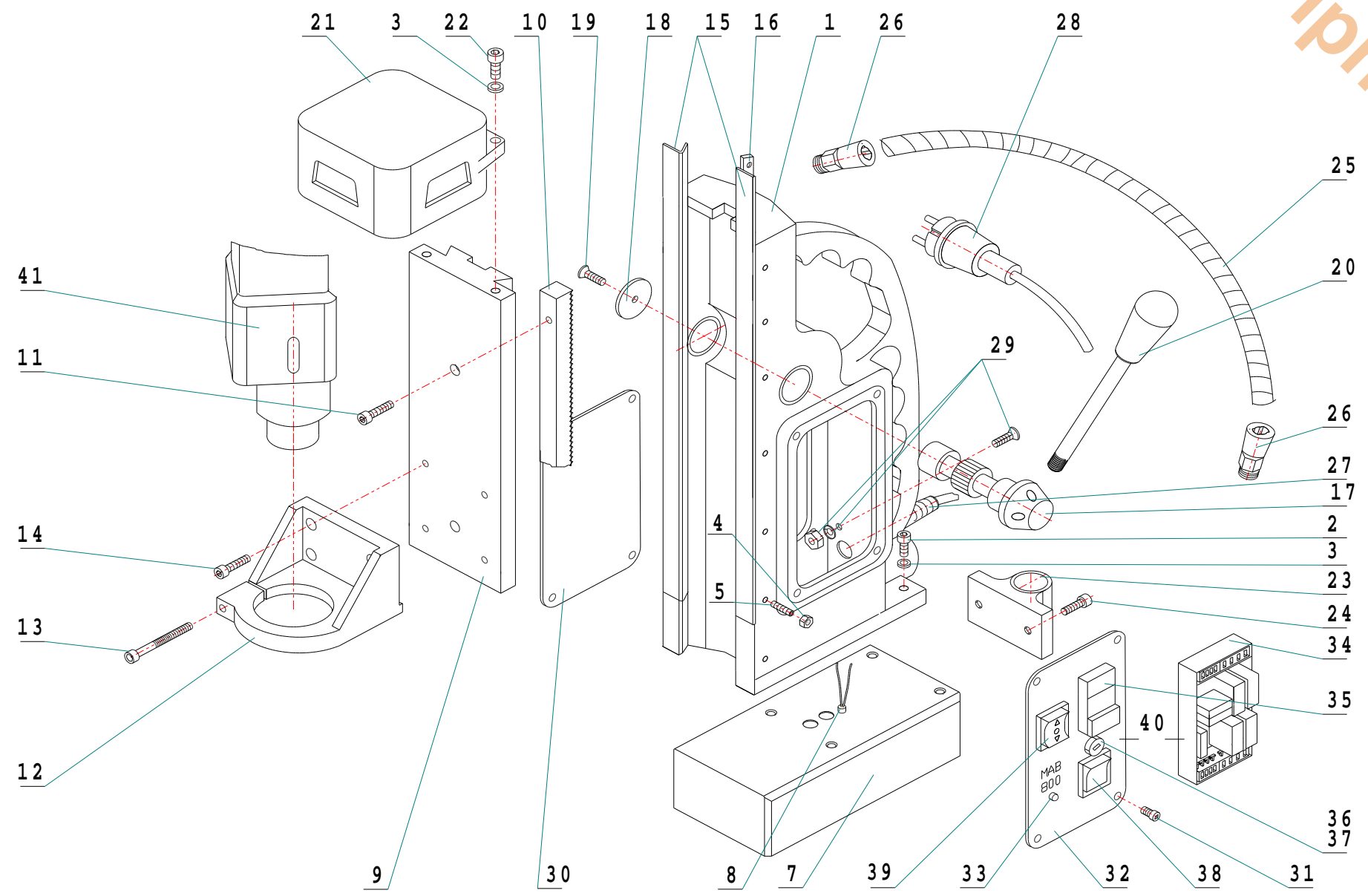
Antriebseinheit 1400W



Item No.	Part.-No.	Denomination
1	60 1041 2	Housing with holes M8 without groove
1 A	60 1041 1	Housing with groove
2	60 1011 1	Screw M6x25
3	60 1002 1	Washer 6,3
4	60 1003 1	Fixing nut M5
5	60 1042 1	Fixing screw M5x25 for Slide
6	60 1043 1	Magnet electric without indikator M6
7	60 1044 1	Slide on demand
8	60 1045 1	Tooth rack length: 280 mm
9	60 1046 1	Screw for tooth rack M6x30
10	60 1047 1	Gear holder for motor
11	60 1048 1	Screw for gear holder M6x55
12	60 1001 1	Screw M6x16
13	60 1049 2	Guide rail (1 set right/left) with groove
13 A	60 1049 1	Guide rail (1 set right/left) without groove
14	60 1050 1	Adjustment rail right, steel
15	60 1051 1	Cover shield with 2 holes
16	60 1052 1	Screw M4x6
17	60 1053 1	Shaft for gear wheel
18	60 1022 1	Disc for tooth rack
19	60 1023 1	Screw for gear wheel M6x16
20	60 1054 2	Handle rod with knob
21	60 1055 1	Cover for motor silver
22	60 1056 1	Screw for cover M8x35
23	60 1057 1	Washer 8,3
24	60 1058 1	Magnet release assembly
25	60 1059 1	Screw M8x16
25 A	60 1001 1	Screw M6x16
26	70 1000 1	Cable protection tube
26 A	70 1054 1	Cable protection tube complete with gland and cable
27	70 1002 1	Gland PG 9
28	70 1003 1	Mains cable gland PG 11
29	70 1004 1	Connection cable 220 - 240 V with plug
29 A	70 1041 1	Connection cable 220 - 240 V with English plug
29 B	70 1005 1	Connection cable 110 V (plug on demand)
30	70 1006 1	Earth screw, complete
31	70 1055 1	Side plate
32	70 1008 1	Screw for side plate M4x6
33	70 1056 1	Switch plate front side

Item No.	Part.-No.	Denomination
34	70 1015 2	PC board with 3 Relais 230 V
35	70 1057 2	Switch plate complete with switches and PC board 230 V
36	70 1012 1	Fuse holder
37	70 1013 1	Fuse 2A, 5x20, 250 V F DIN 41 661
38	70 1014 1	Magnet switch
39	70 1027 1	Switch left / right
39 A	70 1095 1	Operating device - Spare part for switch
39 B	70 1096 1	Shaft for switch right/left
40	50 0800 1	Motor MAB 800 complete 1.800 W (new cover for motor necessary)
40 A	50 0810 1	Motor MAB 800 complete 110 V (new cover for motor necessary)
41	70 1011 1	Actuator

MAB 800
Antriebseinheit 1800W 2-Gang



Stand MAB 800 + MAB 840
2-gears 1800W

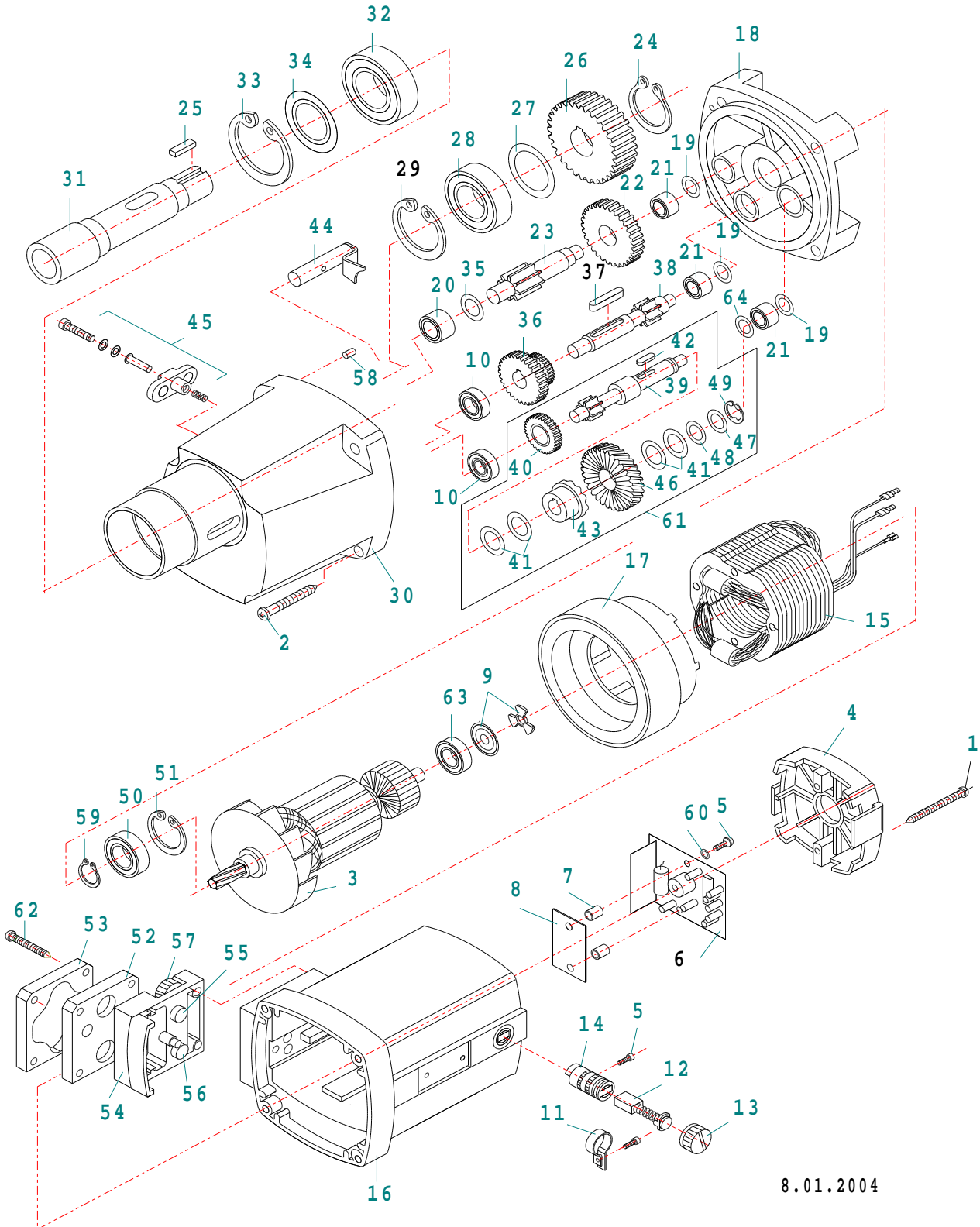


Item No.	Part.-No.	Denomination
1	60 1041 2	Housing with holes M8 without groove
1 A	60 1041 1	Housing with groove
1 B	60 1061 2	Housing for swivel base M8 without groove
1 C	60 1061 1	Housing for swivel base with groove
2	60 1062 1	Screw M8x25
2 A	60 1011 1	Screw M6x25
3	60 1057 1	Washer 8,3
3 A	60 1002 1	Washer 6,3
4	60 1003 1	Fixing nut M5
5	60 1042 1	Fixing screw M5x25 for slide
6	60 1063 1	Swivel base complete
7	60 1043 2	Magnet electric with indicator M8
7 A	60 1043 1	Magnet without indicator M6
7 B	60 1066 1	Magnet with indicator M8 for swivel base
8	60 1006 1	Magnet indicator
9	60 1064 2	Dovetail carriage, asymmetrical, length: 316 mm width: 100 mm hole distance 66 mm
9 A	60 1064 1	Dovetail carriage symmetrical length: 316 mm width: 100 mm hole distance 40 mm
10	60 1045 1	Tooth rack length: 280 mm
11	60 1046 1	Screw for tooth rack M6x30
12	60 1047 1	Gear holder for motor
13	60 1048 1	Screw for gear holder M6X55
14	60 1001 1	Screw M6x16
15	60 1049 3	Guide rail (1 set right/left) to be glued
15 A	60 1049 2	Guide rail (1 set right/left) with groove
16	60 1050 2	Adjustment rail right, brass
16 A	60 1050 1	Adjustment rail right, steel
17	60 1053 1	Shaft for gear wheel
18	60 1022 1	Disc for tooth rack
19	60 1023 1	Screw for gear wheel M6x16
20	60 1054 2	Handle rod with knob
21	60 1065 1	Cover for motor black
22	60 1056 1	Screw for cover M8x35
23	60 1058 1	Magnet release assembly
24	60 1059 1	Screw M8x16
25	70 1000 1	Cable protecting tube
25 A	70 1054 1	Cable protection tube complete with gland and cable
26	70 1002 1	Gland PG 9
27	70 1003 1	Mains cable gland PG 11

Item No.	Part.-No-	Denomination
28	70 1004 1	Connection cable 220 - 240 V with plug
28 A	70 1041 1	Connection cable 220 - 240 V with English plug
28 B	70 1005 1	Connection cable 110 V (plug on demand)
29	70 1006 1	Earth screw, complete
30	70 1058 1	Side plate
31	70 1008 1	Screw for side plate M4x6
32	70 1059 2	Switch plate front side for indicator (from January. 2002)
33	70 1010 1	LED display for indicator red/green (from January 2002)
33 A	70 1033 1	LED display green (until end of 2001)
34	70 1049 2	PC board with 5 Relais 230 V
34 A	70 1050 2	PC board with 5 Relais 110 V
34 B	70 1015 2	PC board with 3 Relais 230 V for switch right/left
35	70 1011 1	Actuator
36	70 1012 1	Fuse holder
37	70 1013 1	Fuse 2A, 5x20, 250 V F DIN 41 661
38	70 1014 1	Magnet switch
39	70 1048 1	Rocker switch left / right (from 05/97)
39 A	70 1027 1	Switch right/left
39 B	70 1095 1	Operating device - spare part for switch right/left
39 C	70 1096 1	Shaft for switch right/left
40	70 1060 2	Switch plate complete with switches and PC board 230 V
40 A	70 1061 2	Switch plate complete with switches and PC board 110 V
41	50 0800 1	Motor MAB 800 complete 230 V
41 A	50 0810 1	Motor MAB 800 complete 110 V

MAB 800

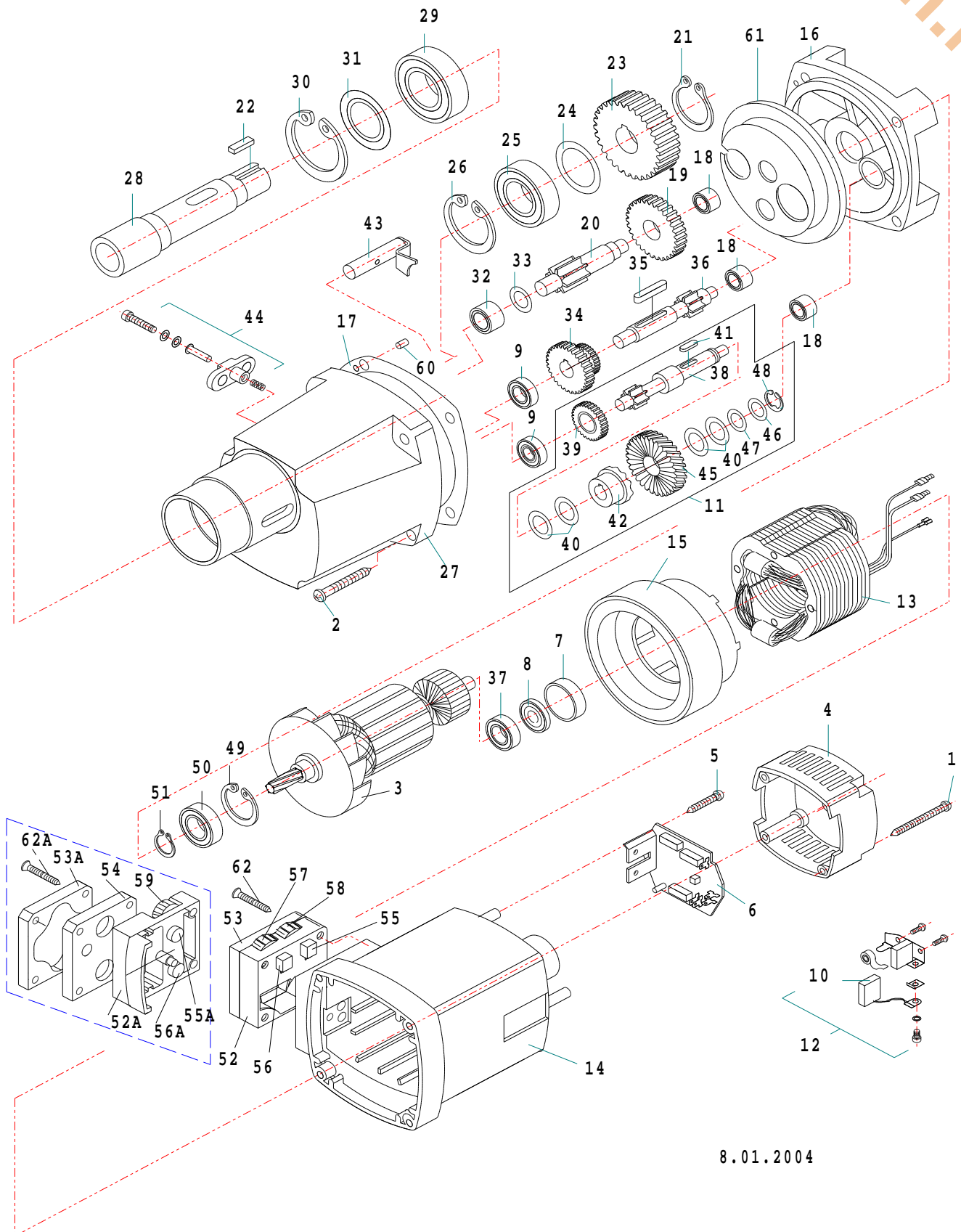
1400W



Item No.	Part.-No.	Denomination
1	50 1058 1	Screw 4,8 x 45
2	50 1091 1	Screw 5,5 x 38
3	50 1092 1	Armature 220-240 V
3 A	50 1093 1	Armature 110 V
4	50 1094 1	Cap for motor housing
5	50 1095 1	Screw 3,9 x 9,5
6	50 1096 1	PC board for motor 220 V
6 A	50 1097 1	PC board for motor 110 V
7	50 1098 1	Distance sleeve
8	50 1099 1	Isolate disk
9	50 1100 1	Disk with wheel
10	50 1101 1	Ball bearing 6000
11	50 1102 1	Span clamp
12	50 1103 2	Carbon brush with spring 6,3 x 12
12 A	50 1103 1	Carbon brush with spring 6,2x10
13	50 1104 2	Carbon brush cap for 6,3 x 12,4
13 A	50 1104 1	Carbon brush cap for 6,2x10
14	50 1105 2	Device for carbon brush feeding 6,3 x 12,4
14 A	50 1105 1	Device for carbon brush feeding 6,2x10
15	50 1106 1	Field coil 220 - 240 V
15 A	50 1107 1	Field coil 110 V
16	50 1108 1	Motor housing
17	50 1109 1	Air conducting ring
18	50 1110 1	Shield plate
19	50 1111 1	Pressure disk
20	50 1126 1	Needle bearing RNA 4900
21	50 1035 1	Needle bearing HK 0810
21 A	50 1112 1	Needle bearing 8x15x10
22	50 1113 1	Intermedium gear wheel 2
23	50 1114 1	Intermedium shaft 3
24	50 1115 1	Circlip ring 24/1,2
25	50 1116 1	Spring B6x6x20
26	50 1117 1	Spindle gear wheel
27	50 1118 1	Shim 25/35x0,1
28	50 1119 1	Ball bearing 6005 2RS
29	50 1120 1	Circlip ring 47/1,75
30	50 1121 1	Gear box case
31	50 1122 1	Spindle
32	50 1123 1	Ball bearing 6006 2Z

Item No.	Part.-No.	Denomination
33	50 1124 1	Circlip ring 55/2
34	50 1125 1	Shim for ball bearing 6006 2Z
35	50 1127 1	Shim for needle bearing RNA 4900
36	50 1128 1	Gear wheel block
37	50 1050 1	Spring A5x5x28
38	50 1129 1	Intermedium shaft 2 12 teeth
39	50 1131 1	Intermedium shaft 1 13 teeth
40	50 1132 1	Intermedium gear wheel 1, 28 teeth
41	50 1133 1	Spring 28/12,2x1
42	50 1134 1	Spring A5x5x10
43	50 1135 1	Part of coupling
44	50 1136 1	Coupling bolt complete
45	50 1052 1	Gear change complete
46	50 1137 1	Gear wheel inclined 36 teeth
47	50 1138 1	Pressure disks
48	50 1139 1	Disk 12
49	50 1141 1	Circlip ring 9
50	50 1250 1	Ball bearing 6001 2RS
51	50 1027 1	Circlip ring 28/1,2
52	50 1144 1	Intermedium cover for potentiometer housing
53	50 1143 1	Cover for potentiometer housing
54	50 1142 1	Housing for potentiometer
55	50 1145 1	Potentiometer for speed control 100 kOhm
56	50 1146 1	Potentiometer for power control 220 Ohm
57	50 1147 1	Adjusting wheel orange
58	50 1148 1	Pin 5x16
59	50 1071 1	Circlip ring 11/1
60	50 1149 1	Insulating washer
61	50 1150 1	Mechanical clutch complete
62	50 1196 1	Screw 6x55
63	50 1006 1	Ball bearing 608 2Z
64	50 1036 1	Washer

MAB 800
1800W 2-Gang



Motor MAB 800 + MAB 840
MAB 1000 2-gears 1800W



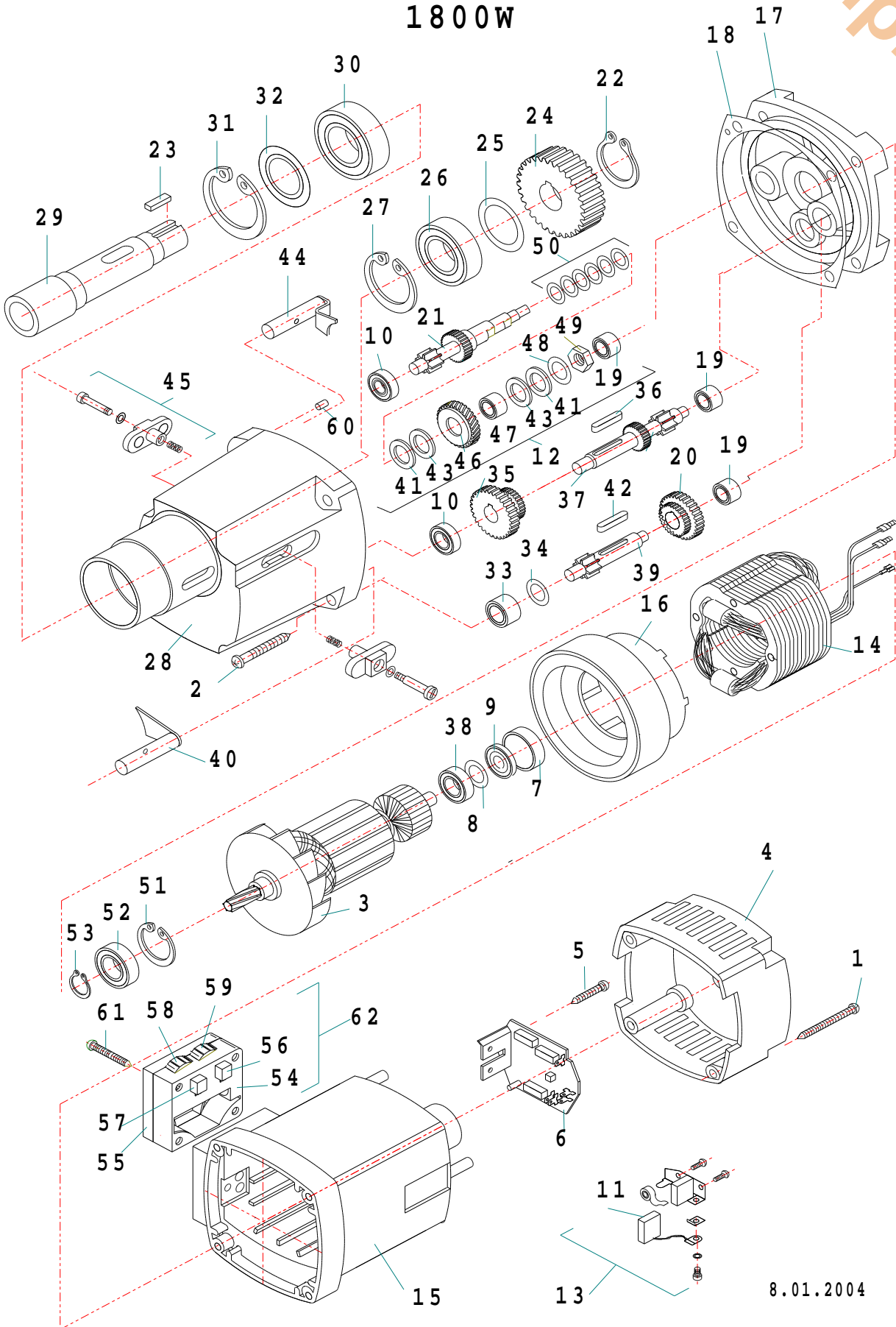
Item No.	Part.-No.	Denomination
1	50 1058 1	Screw 4,8 x 45
2	50 1091 1	Screw 5,5 x 38
3	50 1151 1	Armature 220 - 240 V
3 A	50 1152 1	Armature 110 V
4	50 1153 1	Cap for motor housing
5	50 1095 1	Screw 3,9 x 9,5
6	50 1154 1	PC board for motor 220 V
6 A	50 1155 1	PC board for motor 110 V
7	50 1156 1	Bearing cap
8	50 1157 1	Magnet ring
9	50 1101 1	Ball bearing 6000
10	50 1158 1	Carbon brush 6,2 x 16
11	50 1159 1	Safety clutch complete
12	50 1160 1	Carbon brush holder complete
13	50 1161 1	Field coil 220 - 240 V
13 A	50 1162 1	Field coil 110 V
14	50 1163 1	Motor housing
15	50 1109 1	Air conducting ring
16	50 1110 1	Plate
17	50 1164 1	Gear box gasket
18	50 1035 1	Needle bearing HK 0810
19	50 1113 1	Intermedium gear wheel 2
20	50 1114 1	Intermedium shaft 3
21	50 1115 1	Circlip ring 24/1,2
22	50 1116 1	Spring B6x6x20
23	50 1117 1	Spindle gear wheel
24	50 1118 1	Shim 25/35x0,1
25	50 1119 1	Ball bearing 6005 2RS
26	50 1120 1	Circlip ring 47/1,75
27	50 1121 1	Gear box case
28	50 1122 1	Spindle
29	50 1123 1	Ball bearing 6006 2Z
30	50 1124 1	Circlip ring 55/2
31	50 1125 1	Shim for ball bearing 6006
32	50 1126 1	Needle bearing RNA 4900
33	50 1127 1	Shim for needle bearing RNA 4900
34	50 1128 1	Gear wheel block

Item No.	Part.-No.	Denomination
35	50 1050 1	Spring A5x5x28
36	50 1129 1	Intermedium shaft 2
37	50 1130 1	Ball bearing 6000 2Z
38	50 1131 1	Intermedium shaft 1
39	50 1132 1	Intermedium gear wheel 1
40	50 1133 1	Spring 28/12,2x1
41	50 1134 1	Spring A5x5x10
42	50 1135 1	Part of coupling
43	50 1136 1	Coupling complete
44	50 1052 1	Gear change complete
45	50 1165 1	Final gear for coupling 29 teeth
46	50 1138 1	Pressure disk
47	50 1139 1	Washer 12
48	50 1141 1	Circlip ring 9
49	50 1027 1	Circlip ring 28/1,2
50	50 1250 1	Ball bearing 6001 2RS
51	50 1071 1	Circlip ring 11/1
52	50 1166 1	Housing for potentiometer (from 04/2002)
52 A	50 1142 1	Housing for potentiometer (until 03/2002)
53	50 1167 1	Cover for potentiometer housing (from 04/2002)
53 A	50 1143 1	Cover for potentiometer housing (until 03/2002)
54	50 1144 1	Connecting piece (until 03/2002)
55	50 1140 1	Potentiometer for speed control 100 kOhm 2V (from 04/2002)
55 A	50 1145 1	Potentiometer for speed control 100 kOhm (until 03/2002)
56	50 1168 1	Potentiometer for power control 1 kOhm 7V (from 04/2002)
56 A	50 1169 1	Potentiometer for power control 1 kOhm (until 03/2002)
57	50 1170 1	Adjusting wheel red for power control 7V (from 04/2002)
58	50 1086 1	Adjusting wheel blue for speed control 2V (from 04/2002)
59	50 1147 1	Adjusting wheel orange (until 03/2002)
60	50 1148 1	Pin 5x16
61	50 1171 1	Shaft seal for grease chamber
62	50 1197 1	Screw M 6x45
62 A	50 1196 1	Screw M 6x55

MAB 800.4E

MAB840
1800W

MAB1000



8.01.2004

**Motor MAB 800 + MAB 840
MAB 1000 4-gears**



Item No.	Part.-No.	Denomination
1	50 1058 1	Screw 4,8 x 45
2	50 1091 1	Screw 5,5 x 38
3	50 1172 1	Armature 220 - 240 V
3 A	50 1173 1	Armature 110 V
4	50 1153 1	Cap for motor housing
5	50 1095 1	Screw 3,9 x 9,5
6	50 1154 1	PC board for motor 220 V
6 A	50 1155 1	PC board for motor 110 V
7	50 1156 1	Bearing cap
8	50 1174 1	Pressboard washer
9	50 1157 1	Magnet ring
10	50 1101 1	Ball bearing 6000
11	50 1158 1	Carbon brush 6,2 x 16
12	50 1175 1	Clutch
13	50 1160 1	Carbon brush holder, complete
14	50 1176 1	Field coil 220 - 240 V
14 A	50 1177 1	Field coil 110 V
15	50 1163 1	Motor housing
16	50 1109 1	Air conducting ring
17	50 1178 1	Shield plate
18	50 1164 1	Gear box gasket
19	50 1035 1	Needle bearing HK 0810
20	50 1179 1	Gear wheel block 2
21	50 1180 1	Intermediate shaft 1
22	50 1115 1	Circlip ring 24/1,2
23	50 1116 1	Spring B6x6x20
24	50 1181 1	Spindle gear wheel
25	50 1118 1	Shim 25/35x0,1
26	50 1119 1	Ball bearing 6005 2RS
27	50 1120 1	Circlip ring 47/1,75
28	50 1182 1	Gear box case
29	50 1122 1	Spindle
30	50 1123 1	Ball bearing 6006 2Z
31	50 1124 1	Circlip ring 55/2
32	50 1125 1	Shim for ball bearing 6006
33	50 1126 1	Needle bearing RNA 4900
34	50 1127 1	Shim for needle bearing RNA 4900
35	50 1183 1	Gear wheel block 1
36	50 1090 1	Spring A5x5x20

Item No.	Part.-No.	Denomination
37	50 1184 1	Intermediate shaft 2
38	50 1130 1	Ball bearing 6000 2Z
39	50 1185 1	Intermediate shaft 3
40	50 1186 1	Bolt for clutch 2
41	50 1187 1	Spacer (2 pieces)
42	50 1188 1	Spring A6x6x40
43	50 1189 1	Brass disc (2 pieces)
44	50 1190 1	Bolt for clutch 1
45	50 1052 1	Gear change complete
46	50 1191 1	Clutch center wheel
47	50 1192 1	Cylinder bearing 1210T
48	50 1193 1	Washer 25x12,2x0,9
49	50 1194 1	Nut
50	50 1195 1	Washer 28x14,2x1,5
51	50 1027 1	Circlip ring 28/1,2
52	50 1008 1	Ball bearing 6001 2Z
53	50 1071 1	Circlip ring 11/1
54	50 1166 1	Housing for potentiometer
55	50 1167 1	Cover for potentiometer housing
56	50 1140 1	Potentiometer for speed control 100 kOhm 2V
57	50 1168 1	Potentiometer for power control 1 kOhm 7V
58	50 1170 1	Adjusting wheel red for power control 7V
59	50 1086 1	Adjusting wheel blue for speed control 2V
60	50 1148 1	Pin 5x16
61	50 1197 1	Screw 6x45
62	50 1198 1	Potentiometer housing complete